

Strategy pays off

Planning provides Mom's Weekend choices

By Janie McCauley
Contributing Writer

Members of the Mom's Weekend committee approached the planning effort in a little different way this year. And it has paid dividends.

Members in charge said there wasn't enough awareness last year about how groups could sponsor events for the weekend.

"Last year we just put out forms and didn't get a good response," said senior Mary Galloway, calendar chair and sub-chair for the committee. "This year we made a list and also called people. We did it both ways and got a good response."

Galloway said sometimes it's difficult trying to form a list of activities far in advance because many of the groups sponsoring events haven't thought ahead that far. But the committee received commitments from many repeat sponsors.

Close to 56 activities will be going on

“**There are more activities this year. There were a lot of repeat people (planning events).**”

Mary Galloway
Mom's Weekend Committee

during the three days, including 35 that are free. Calendars with lists of the activities and locations will be available throughout the weekend in the CUB, the Bookie, and in various residence halls and Greek houses.

"There are more activities this year," Galloway said. "We're pleased."

"There were a lot of repeat people (planning events)."

Besides the three standard activities — the Mom's Weekend Pancake Feed from 7 a.m. to 1 p.m.

Saturday at the WSU Fire Station, the 7th Annual Walk/Run beginning at 7:15 a.m. Saturday at Ferdinand's and the 8 p.m. musical theater production "Guys and Dolls" — some new events are featured, Galloway said.

The Gay, Lesbian and Bisexual Association offered a Mother's Tea and Social on Friday night for mother's and students to have the chance to discuss GLBA and its services.

The African American Association did something different this year, Galloway said. The group performed "Gospel Extravaganza," which featured the Unity Gospel Choir, the African Friendship Association Dancers and the African-American Fashion Showcase.

Also, the Crimson Company singers performed Friday and will perform again at 8 p.m. Saturday at Beasley Coliseum. The group has performed in the past but didn't participate in the activities last year so its return will be an attraction, Galloway said.

Hawaii Club caters to moms, community

Mothers and those in the WSU and Pullman communities alike are invited to attend a night of travel from the Southeast Islands to Hawaii on Saturday.

Minus the traditional food, this year's 11th annual Polynesian Entertainment Night will take place during Mother's Weekend as usual. Hui Hauoli o Hawai'i I, or the Hawaii Club, will provide entertainment by means of dancing and live music, said Chair Colin Ngai.

Called "I Ho'okahi ka Umauma, Ho'okahi ke Aloha," or "All United in Harmony," the evening will "show off" traditional dancing from Hawaii, Tahiti, New Zealand and Samoa, Ngai said.

Dennis Bautista, one of the program's organizers, explained the performance as "a Polynesian play to draw together the cultures in Polynesia and the South Pacific."

"We're gonna try to make it like the audience is traveling from Samoa, to New Zealand, then Tahiti and then migrating to Hawaii," Bautista said.

He explained the research members of the Hawaii Club have done, linking these cultures to that of

Hawaii.

"We are essentially one people," Bautista said. "That is, Polynesians who migrated from the Southeast Islands."

Because so many different ethnic groups are now part of the Hawaiian culture, not only Hawaiians will be featured in the event.

In the past, the celebration has taken place at Lincoln Middle School, where organizers have access to a kitchen and eating area. This year's celebration is taking place at Bryan Auditorium.

"We couldn't get the same location," Ngai said. He plans to have traditional luau at the middle school next year.

The Hawaii Club is self-sufficient, meaning that the organization is recognized by ASWSU but not funded, as the other multicultural student groups are.

"We try to stay involved with APASC (Asian Pacific American Student Coalition)," Ngai said.

Bryan Auditorium seats a maximum of 700, and Ngai said he is hoping to sell 625 tickets at \$6 a seat.

Mom's Weekend Briefs

◆ **Attention all A.S. majors:** Put \$\$ down for your favorite professor to Kiss the Cow! Submit money in the A.S. office. Contest ends April 19. Then come to the bar-b-que and watch the Kissing Ceremony.

◆ The 7th Annual Mom's Weekend Step-off will be sponsored by Kappa Alpha Psi Fraternity Inc. on Saturday, April 20 from 4:30 to 7 p.m. at Beasley Coliseum. For more information call 335-1514.

◆ College of Veterinary Medicine "IAMS Dog Days Run" Saturday, April 20, 5K run for people, 1 mile run with your dog, or 1/2 mile exotic pet/costume run/walk. Registration 8 a.m. Bustad Hall, T-shirts to all entrants.

◆ Attention Seniors Remember to bring your moms to our **Mom's Weekend Reception** at the Alumni Centre on Friday, April 19 from 4:30-6:30 p.m. Hosted by Student Alumni Connection.

◆ **Mom's Weekend Masses:** Saturday, April 20 at 5 p.m., Sunday, April 21 at 9 a.m., 11 a.m. and 7 p.m. St. Thomas More Catholic Newman Center, NE 820 "B" St. All are welcome.

◆ The **Geology Club** will conduct roof tours on Saturday, April 20 from 9 a.m. to 1 p.m. View the Palouse from the top of Webster physical science building. Tours will commence every 20 minutes from the lobby. The Jacklin Petrified Wood Collection and Culver Museum will be open as well.

◆ **WSU Mom's Spring Arts and Crafts Fair** is at Beasley Coliseum on April 19 and 20. The fair runs from 10 a.m. to 9 p.m. on Friday and from 9 a.m. to 3:30 p.m. on Saturday.

◆ **Mom's Weekend Brunch** will feature a slide show by Bob Smawley in the CUB Ballroom from 10-11 a.m. Cost is \$7.

◆ Take you mom on a **free wagon ride!** Take a tour of the campus on a wagon pulled by a tractor on April 20 from 10 a.m. to 4 p.m. Begins at CUB. Just like the good ol' days, huh Mom?

◆ **Mother's Tea and Social** on April 19 from 5-7 p.m. For moms and students to talk to GLBA (Gay, Lesbian, Bi-sexual Association) in CUB B-19A and 17.

◆ Look in the **Daily Evergreen's calender** for more Mom's Weekend events!

**The more you
ADVERTISE
the more you
SAVE**

**Corner
DRUG**

Downtown Pullman

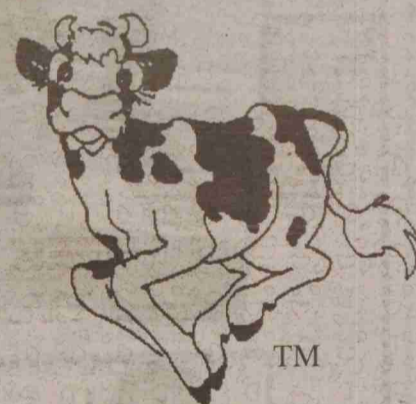
25% off

334-1565 * M-F 9-8 * Sat 9-6 * Sun 11-5

- WSU Memorabilia
- Mary Englbreit
- All Picture Frames
- All Candles

*Mother's Day
and Graduation Gifts
All Weekend Long*

**In honor
of Mom's
weekend**



FERDINANDS

will be open

Saturday, April 20

9:30 a.m. to 4:30 p.m.

WSU Creamery • 101 Food Quality Building • 335-2141



**Welcome
Moms**

*We Love You!
your kids in Gannon Goldsworthy Hall*