





# Weather

Pullman forecast from the National Weather Service at [www.weather.com/weather/us/cities/WA\\_Pullman.html](http://www.weather.com/weather/us/cities/WA_Pullman.html)

TUE.	WED.	THURS.	FRI.
			
H 36 L 25	H 35 L 26	H 44 L 33	H 46 L 34
Snow	Sunny	Mostly cloudy	Mostly cloudy

## Community CALENDAR

- ◆ **AMA Marketing Club** "Planning Forum" on Tuesday at 6:00 p.m. in CUB 123. Help the marketing club plan its future and gain valuable marketing experience.
- ◆ Interested in current events and debate? Want to learn how to write mock legislation? Come, join the **Washington Intercollegiate State Legislature**. We meet every Tuesday at 6 p.m. in CUB 232.
- ◆ **Black Women's Caucus** will have a meeting on Wednesday in CUB 224 at 5:10 p.m. All are welcome!
- ◆ **Real Estate Club Meeting** on Tuesday at 6:30 p.m. Pizza party at Jen's house! Stop by the Finance office to pick up a map. See you there!
- ◆ **WSU Robotics**: If you are interested in working in a simulated business environment, please come to our informational meeting on February 4th, 7 p.m., in Sloan 175 or contact Josh Myers at 334-0434 or [jmyers@eecs.wsu.edu](mailto:jmyers@eecs.wsu.edu)
- ◆ The **GLBA** has its weekly meetings at 5:30 p.m. on Tuesdays in CUB B-17. All are welcome.
- ◆ Alternatives to Violence of the Palouse, a non-profit United Way Agency, is offering **volunteer advocate training sessions** on domestic violence and sexual assault. The first session will meet on Feb. 4, from 6:30 to 9:30 p.m. at St. Mark's Episcopal Church at 111 S. Jefferson in Moscow, ID. For more information, call 332-0552.
- ◆ Applying for financial aid and need help with the **FAFSA or Renewal FAFSA**? Workshops will be held in the Office of Student Financial Aid: Tuesday, 11 a.m. - noon; Wednesday 3-4 p.m.; Thursday noon-1 p.m.
- ◆ Come to the Next meeting of the WSU chapter of the **National Organization of Women** at Cub 291 at 5:30 p.m. on Wednesday. Will discuss upcoming plans.
- ◆ Financial Aid Community Open House, Tuesday 6-9 p.m. Open to students, parents, and staff to visit or call 335-9711. Lighty Student Services Building 380.
- ◆ **Apha Phi Sigma Criminal Justice Honor Society Meeting** Tuesday at 7 p.m. in the conference room of 8th floor Johnson Tower. Questions? Call Chris Hilton at 333-3247.
- ◆ Earn credits, gain valuable presentation experience, and impact our social culture. Join **CEAK (Cougars Encouraging Alcohol Knowledge)** and **SIRC (Sexual Information and Referral Center)**. For more information call 335-9355.
- ◆ Have you ever been interested in working with people that have special needs? If so, the **Special Olympics** needs volunteers for the upcoming track and field season. Applications are available at the YMCA (3rd floor CUB) and are due by Tuesday.
- ◆ **Pre-registration for Catholic Confirmation** sessions: Contact St. Thomas More Catholic Newman Center at 332-6311, 820 NE 'B' S.



STAFF PHOTO BY NICOLE WALLA

Heidi Moulton (left) talks with ROTC evacuator Brett Hanson after a morning exercise on Thursday. Moulton is the spring semester batallion commander.

## ROTC appoints female leader

By **KELLY KEELER**  
Contributing Writer

The third female batallion commander named in 20 years doesn't want to be the only female involved in the ROTC program at WSU.

As Heidi Moulton enters her semester-long position, awarded this week, she said she would like to see more female involvement and support, adding that overall the entire ROTC program is extremely supportive of female involvement.

"I think that my leadership style will be reflective of the great people currently in the program," Moulton said. "My feeling is if it isn't broke don't fix it."

The program is run by seniors who switch jobs each semester. About 200 people are involved in the university ROTC.

"It's going really great, everyone knows what their job is," Moulton said.

"I enjoy motivating females in the program because they look to their peers to help motivate them and answer questions about the military," she said. "I am ready for that."

Moulton is a senior in civil engineering with an environmental emphasis. She said she hopes to work in the aviation field after graduation.

"I can't think of a better person to do the job," said Lt. Col. Pat Armstrong, who made the selection along with the ROTC staff.

Battalion commanders are chosen based on their academic

**"I enjoy motivating females in the program because they look to their peers to help motivate them."**

HEIDI MOULTON  
Batallion commander

standing, involvement with campus activities and performance at the Advance Camp Training which is held during the summer.

"Heidi did exceptional in all areas," Armstrong said. "She has natural leadership ability; the respect

she receives from peers in the program and her great sense of humor makes her a positive person with excellent people skills."

Moulton said her biggest supporter was previous battalion commander Kirk Liddle.

"Kirk was very supportive and a great role model," Moulton said. "I learned so much just by watching him handle situations."

Norma Hatley, ROTC program coordinator, has worked at the Army ROTC Department for more than 20 years and said there have been very few women in the program and even fewer female battalion commanders.

In addition to being selected as the next battalion commander, Moulton recently received the George C. Marshall ROTC Award.

January Special

**13 TANS for \$28**

(Reg. \$40)

**5 NEW WOLFF BEDS**  
**20 minute sessions**  
**Newest and Cleanest Salon in Town!**  
**START TODAY**

• European Omni Spa  
• Pedicures  
• Artificial Nails  
• Manicures

Simply Nails  
& Tanning

Open  
mon-thur 9-9pm  
fri 9-8pm  
sat 9-6pm

315 S. Grand • 334-7706

## The Daily Evergreen

EDITOR IN CHIEF  
Tracy Cutchlow  
335-2488

MANAGING EDITOR  
Mai Ling Slaughter  
335-1099

NEWS EDITOR  
Christina Bottomley  
335-1140

SPORTS EDITOR  
Jeff Nusser  
335-2292

OPINIONS EDITOR  
Fekadu Kiros  
335-1140

BORDERLINE EDITOR  
Forrest Reda  
335-3194

FEATURES EDITOR  
Liz Mendez  
335-1140

ONLINE EDITORS  
Tom Shannon, Liane Yvokoff  
335-1571

PHOTO EDITOR  
Shawn McCully  
335-2377

ADVERTISING MANAGER  
Jessica Phillips  
335-1572

PRODUCTION MANAGER  
Scott Culley  
335-4576

GRAPHICS MANAGER  
Chelsea Brothers  
335-2374

CLASSIFIED ADVERTISING  
335-4573

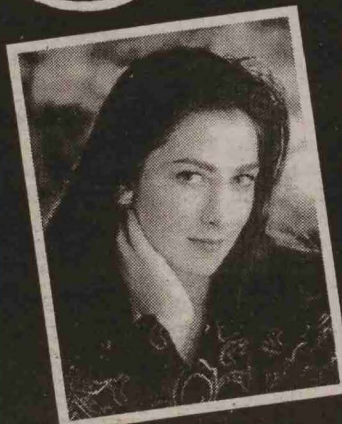
NEWSROOM E-MAIL  
[egreen@mail.wsu.edu](mailto:egreen@mail.wsu.edu)

CIRCULATION & DISTRIBUTION  
Al Donnelly  
335-4573

The Daily Evergreen is published by the Student Publication Board at WSU. Bob Hilliard is the general manager. The editorial board is responsible for all news policies. Third-class postage paid at Moscow, ID. Postmaster: Send address changes to The Daily Evergreen, Room 113, Edward R. Murrow Center, Pullman, WA 99164. Mail subscriptions are \$55 per year or \$40 per semester. USPS 142-860.

For Valentines Day...

Soft Touch  
GLAMOUR PORTRAITS



Soft, sensitive portraits of a women, for the man in her life. The perfect Valentine's Day gift.

Special Limited Offer  
**FREE SESSION!**  
Call for details

Includes incredible makeover & photography session!



Creative Image  
PORTRAIT DESIGN

E. 222 Main • Pullman, WA 99163  
Toll Free 1-800-362-9815 or 332-0106