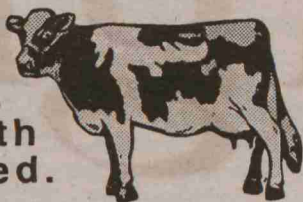


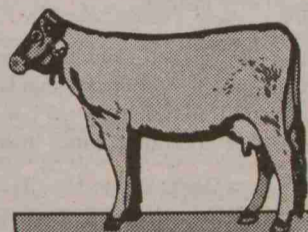
# ASWSU

**ASWSU Ski Team Meetings Tuesdays @ 6pm, CUB 110, starting Sept. 24th. No experience necessary. Both men and women racers needed.**



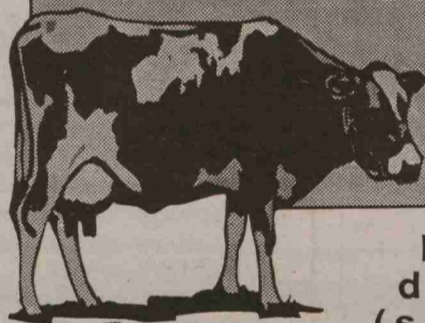
**GLBA: Coming Out Week Oct. 7-11**  
 10/7 Gloria Anzaldua  
 10/8 Laura Bowly/ATV  
 10/9 GLBT/Movies 7:30-9:30pm  
 10/10 Politics of Community/Movies 7:30-9:30pm

**All students are invited to a Legislative Candidates Forum at 4pm on Oct. 7 in the CUB Ballroom. This forum will allow everyone to hear legislative candidates' views on higher educational issues. A reception will follow.**



**DAD's Weekend: Nominate your Dad for WSU's Dad of the Year! Applications available at CUB 337 Activities/Rec. Sports Office. All applications are due by 4:30pm. Oct. 11 in CUB 337.**

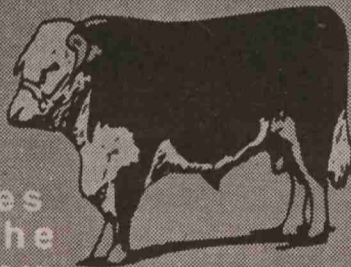
**KZUU \* 90.7 \* KZUU \* 90.7 KZUU \* 90.7**  
**Taste a moment of madness....listen to the sound of purple. No cable necessary.**  
**Request line: 335.2207**  
<http://www.wsu.edu:8080/~kzuu>



**Lecture & Performance Series Committee will meet Thursday, Oct. 10 @ 6pm in CUB 112. New members always welcome.**

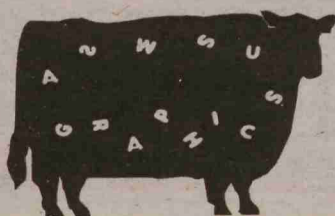
**If you enjoy political discourse & legislative (simulation) WISL is for you. Washington Intercollegiate State Legislature meet every Tuesday @ 6pm in CUB 232.**

**Rock Show: The Verve Pipe, Citizen's Utilities, Super 8, in the CUB Ballroom Fri. Oct. 11th - \$5 student, \$6 non-student. Tickets available at Lecture Notes (2nd Flr. CUB) and at the Door. Brought to you by ASWSU entertainment committee.**



**HAMMERFEST Mountain Bike Race Oct. 13 Sunday @ 11am Beaseley Coliseum parking lot. Men's and Women's races - fun & big prizes. Call 332.0888 for ton's of Info!**

10/7	Activities Calendar	10/8
12pm Brownbag: Transgendered Issues, CUB 214	12pm Brownbag: Alternatives to Violence, CUB 214	
2-4pm Gloria Anzaldua Wkshp	12pm Laura Bowly - Mail/Lair	
4pm Legislative Candidate Forum, CUB Ballroom	5:30pm ETF, Films, GLBA Mtg	
6pm MEChA - Monday Night Football at Butch's Den	6pm WISL Mtg	
	6:30pm Coffeehouse, Entertainment Mtg	



## Community CALENDAR

- ◆ **Human Development Student Club** meeting Tuesday from 5:30-6:30 p.m. in Hulbert Room 27.
  - ◆ **Join other survivors of sexual assault** on Mondays from 4-5:30 p.m. in the Lighty Building, Counseling Services Room 280x. Call Karen T. at 335-4511.
  - ◆ **Black Women's Caucus** will be holding a meeting Wednesday at 5:15 p.m. in the CUB Room 224. All are welcome.
  - ◆ **Attention Clubs and Organizations!** Capture the memory and buy a space to represent yourselves in the 1997 Chinook Yearbook. To get a contract come to Murrow 113. Deadline is Oct. 25.
  - ◆ **Have you ever wanted to build your own airplane?** The AIAA, American Institute of Aeronautics and Astronautics, is designing and building a remote control airplane. If you are interested, come join us on Monday at 5 p.m. in Sloan 245 or e-mail to [AIAA@mme.wsu.edu](mailto:AIAA@mme.wsu.edu).
  - ◆ **Astronomy Club** Meeting Wednesday at 4:45 p.m. in Neill 216, holding elections for officers and lots of pizza. Everyone is welcome.
  - ◆ **YWCA Week Without Violence** is Monday through Friday. Support our efforts in confronting violence against women, protecting our children, and eliminating racism and hate crimes.
  - ◆ **Volunteers needed** to read test for students days and/or evenings at the **Disability Resource Center**. If interested please contact Lynne Wedel at 335-1566
  - ◆ **Genetics and Cell Biology** will be holding an Internet access class for Biology conducted by Steve Thompson at Commons 210 on Monday, Oct. 7th at 6 p.m. Pizza and pop provided, all majors welcome.
  - ◆ **Anthropology Club** meets every other Tuesday beginning October 8 at 6:30 p.m. in College Hall lounge. Anthro majors not required.
  - ◆ **Gay, Lesbian, Bisexual Association** has a meeting every Tuesday at 5:30 p.m. in CUB 19A. All are welcome.
  - ◆ **Dad of the Year** applications are now available on the third floor of
- the CUB. Applications must be submitted by Oct. 11.
  - ◆ **Alpha Phi Omega**, the national co-ed service fraternity, invites everyone interested in **community service** to our meetings Sundays at 6:30 p.m. in CUB B7-B9. Call 334-0619 for information.
  - ◆ **Meet other survivors of childhood sexual abuse and assault** on Tuesdays from 5-6:30 p.m. in the Lighty Building, Counseling Services, Room 380x. Call Karen T. at 335-4511 for details.
  - ◆ **Interested in learning Japanese conversation?** Stop by our Japanese Student Association office located at McCroskey Hall or call 333-2857.
  - ◆ **The Unity Gospel Choir** is now looking for musicians. If you are interested please contact Ebony Ross at 334-2242.
  - ◆ **Tune in to KZUU 90.7 FM for music from India**, Sundays 9-11 a.m.
  - ◆ **Take a study break**, join us for **9:30 p.m. Mass**. It's a great time for sharing and community. St. Thomas More Catholic Newman Center, 820 NE B St. All are welcome. Bring a friend.
  - ◆ **A Palouse cultural events calendar** covering concerts, exhibits, plays, etc. both on and off campus, in Pullman and in Moscow is on the World Wide Web at [http://www.wsu.edu:8080/%7Ewld-civ/brians\\_syllabus/events.html](http://www.wsu.edu:8080/%7Ewld-civ/brians_syllabus/events.html). Try it!
  - ◆ **Learn your hypnotizability level** and participate in hypnosis research (Attentional Processes Lab). Students who complete the study are eligible to win \$100. Call 332-7292 for information.
  - ◆ **Are you a veteran, single parent, married or simply been away from school for a while?** Join reentry students for a brown bag lunch Tuesdays at noon in CUB 113.
  - ◆ **Need assistance?** If you need assistance with a **university-related problem**, have a question about university policy, or want to discuss an issue or complaint confidentially, contact the Ombudsman's Office, Wilson Hall, Room 2, or call 335-1195.

The Daily Evergreen is published by the Student Publication Board at WSU. Bob Hilliard is the general manger. The editorial board is responsible for all news policies. Third-class postage paid at Moscow, ID. Postmaster: Send address changes to The Daily Evergreen, Room 113, Edward R. Murrow Center, Pullman, WA 99164. Mail subscriptions are \$55 per year or \$40 per semester. USPS 142-860.

National Touring Musicals Presents

\*\*\*\*\*

**IRVING BERLIN'S**

**ANNIE**

**GET YOUR**

**GUN** AMERICA'S GREATEST MUSICAL

\*\*\*\*\*

**TUES, OCT 8TH**  
**7:30PM**  
 Beasley Coliseum,  
 Pullman

Starring:  
**GLENN**  
**YARBROUGH**  
**RITA**  
**McKENZIE**

**THERE'S NO BUSINESS LIKE SHOW BUSINESS AND THERE'S NO SHOW LIKE IRVING BERLIN'S ANNIE GET YOUR GUN!**  
 "A rich romantic story, a melodious score with brilliant lyrics." **NEW YORK TIMES**

Tickets: Adults \$25, \$20, \$16; Students, \$16, \$10;  
 Children \$12, \$8 at Beasley, Depot, UI Ticket Express  
 Group rates of 10 or more, call 883-DANS  
**Presented by Festival Dance and Performing Arts**  
 Business Sponsors: First Security Bank & Presnell Gage, GPS's