



Weather:
Mostly
Sunny
High, 74
Low, 47

WSU Camp
Basketball camp draws teens
from the area

Page 3

Inside:
Opinions.....4
Sports.....6
Classifieds.....14
ONLINE AT WWW.
ONLINE-GREEN.COM

The Summer Evergreen

VOLUME 102, NUMBER 167

SINCE 1895



Board considers double duties

By Alan Bloss
The Summer Evergreen

Wednesday, the Student Book Corporation Board of Directors entertained a motion to allow Michael Chin to be reinstated as a voting member of the board.

The matter will be taken before the Board of Regents next Friday when ASWSU president Matt Caires will ask them to permit Chin to serve as both ASWSU Minority Affairs Director and a member of the SBC Board of Directors.

"It looks very good at this point," Caires said.

"I think he will be confirmed by the board next Friday," ASWSU senator John Musella said.

"They don't want to rush into a decision." "It would help establish better communication between ASWSU and the bookie board," Musella said.

The old policy, an informal rule of operation, stated that any voting member of ASWSU would not be allowed to serve on the board at the same time.

The board voted Wednesday to amend a bylaw, a legal statement, restricting membership in both organizations. As a result, Chin will probably be the last student allowed to occupy both positions.

The bookie provides ASWSU with annual dividends, which this year amounted to \$70,000. The bylaw was put in place to prevent a possible conflict of interest involving voting issues.

"The students elect ASWSU members because of their leadership abilities," Caires said. "If they trust them on ASWSU issues, I believe the students would trust them to serve (on the board also)."

The issue was challenged last month after a letter from Bookie General Manager Dave Cooper was sent to President Sam Smith on April 25. The letter, then sent to the Board of Regents for consideration, excluded Chin's name from a list of nominees for two-year terms on the SBC Board.

Chin was chosen to be on the Bookie Board at the end of April, and the decision was later reversed when Caires selected Chin to serve on the ASWSU executive board as Minority Affairs Director.

When the Bookie Board considered dis-

missing Chin, Caires and former ASWSU President Jesse Harris went before the Board of Regents and asked them to revise the policy. The Board at that time tabled the issue.

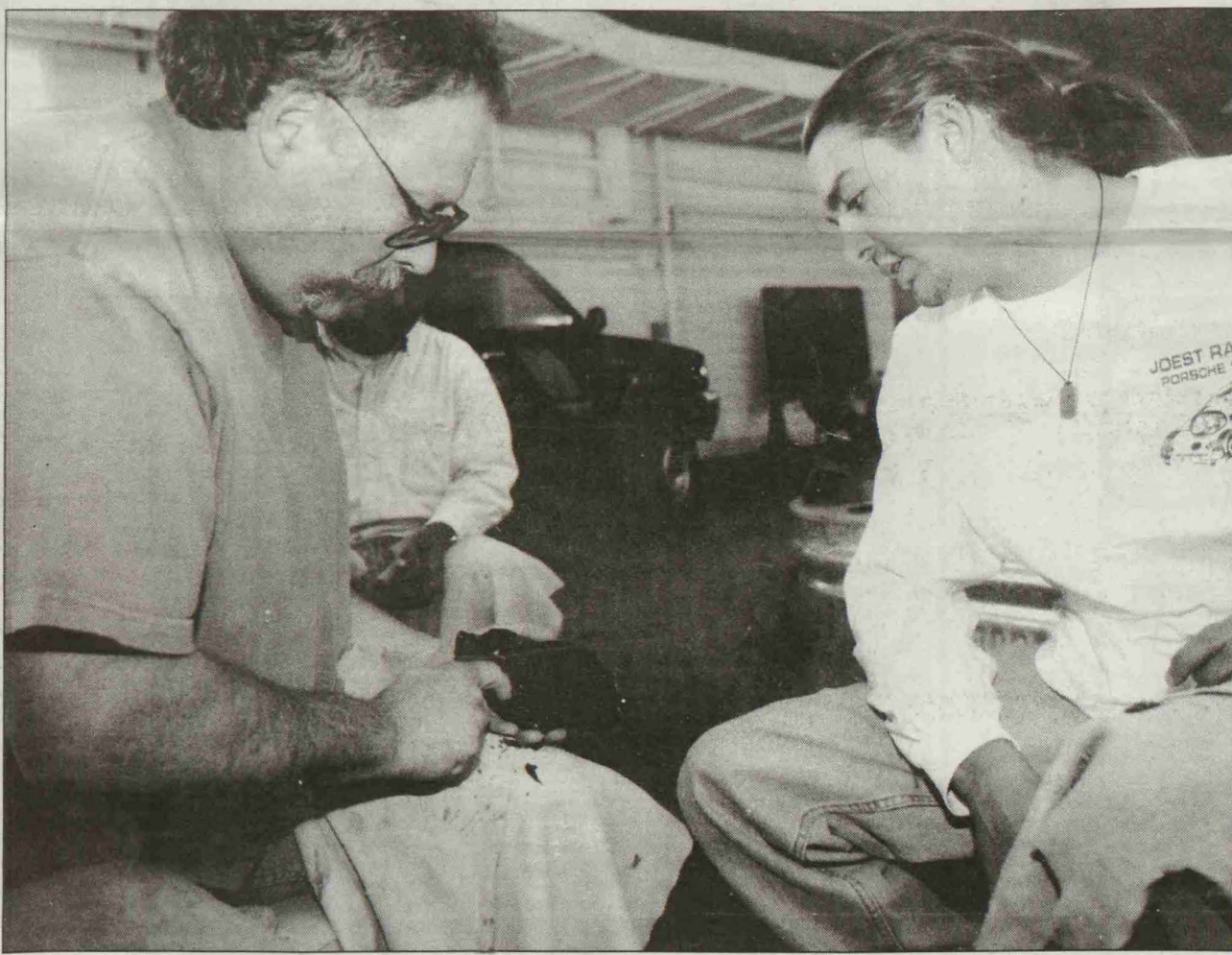
Another revision to the SBC bylaws was the addition of a Graduate and Professional Student Association (GPSA) representative to the voting board.

The old bylaw stated that only three bookie board members and three student directors must be chosen as representatives.

"That was a real victory for us," Musella said.

"Grad students deserve and need representation on this board," Caires said.

Chippin' away



Jeff Flenniken, analysis consultant of stone tools, (l) shows Eric Harkrader how to make a tool out of obsidian. Harkrader is visiting WSU from Hamilton College in Fairfield, CT.

Staff photo by Jacques Plante

Parking fee increase set

By Laura Shireman
The Summer Evergreen

Parking fees will increase to meet rising costs, the assistant director of public safety and the vice president for business affairs at WSU said Wednesday.

Sallie Giffen, vice president for business affairs, said Parking Services needed to increase prices to meet inflation.

"They haven't been increased in several years so there is a need to recognize that prices need to increase," she said.

Assistant Director of Public Safety John Shaheen agreed. "It's really a cost driven thing," he said. "Costs go up and fees go up in accordance."

Both Giffen and Shaheen agree it costs more to park at WSU than at Eastern Washington University or Central Washington University, both of which are in areas with levels of urbanization similar to those in Pullman.

"We're a major research institution whereas the others are just undergraduate schools," Shaheen said. "We're the major land grant university in the state. While we're in a rural area, we're an urban-like university."

Giffen said WSU may have different needs in terms of budget. She said EWU, for example, has fewer parking lots than WSU.

Officials at Parking Services make a recommendation of prices to the Parking Committee, comprised of students, faculty and staff. The committee then approves or rejects the budget recommendations, Giffen said. She said the committee reports to her and she reports to the Board of Regents, which has final say on the budget.

Shaheen said the money goes into a general parking fund which helps pay for operating expenses, snow and gravel cleanup, painting and striping, maintenance, some transit, surface repair and capital improvements such as new facilities.

Giffen said WSU does not have to give money to Parking Services in order for it to function.

"Parking Services is totally self-sufficient," Giffen said.

Both pointed out businesses have other options besides purchasing a commercial permit, the price of which increased by the largest amount of all permit prices.

"They have several options," Shaheen said. The commercial permit "gives them more flexibility," he said. "It's a premium permit."

Shaheen said businesses purchase visitor permits or pay meters instead of buying the commercial permit which now costs \$450 per year, up from \$140 per year.

The commercial permit had been underpriced in the past, Shaheen said. "When you break it down on a monthly basis, it's about \$30 per month," he said. "If you went to Spokane, you'd pay double that to park in a garage."

GLBA director calls it quits

Study finds atmosphere for gays, lesbians, bisexuals not positive

By Kristine Pimley
The Summer Evergreen

The director of the Gay, Lesbian, and Bisexual Association is leaving her position at WSU. The decision is based partly on her perception of attitudes held by both students and administrators toward the gay and lesbian community on campus.

bobbi bonace (sic), director of GLBA, accepted an offer last Friday to become the coordinator of athletic programs at California State University at Monterey Bay next fall. She made her decision three weeks after the offer was made - the delay came from her hesitance to leave Pullman and the GLBA program, bonace said.

"I had no choice . . . I've been fighting for progress for diversity, yet nobody from central administration was willing to step up," said bonace, referring to her partner's situation as a temporary faculty member hoping for a more permanent position which never materialized.

"It is politically impossible for this university to do anything that might give the impression that they have accommodated a lesbian couple," bonace said last week.

Although the decision to leave WSU "was a painful one," bonace said she welcomes the opportunities presented to her through the job offer at CSU Monterey.

"I was very flattered to have an opportunity in athletics," said bonace. "That's where

most of my work has been."

bonace came to WSU in 1989 as a member of the athletic department, working in the area of compliance. Her most recent position, as the GLBA Program director, has kept her occupied for the last two years.

One of the projects with which bonace was recently involved was a survey released last year on the climate for gay, lesbian and bisexual students at WSU. Bonace commissioned a task force meeting last year on gays, lesbians and bisexuals. Members of the Sociology Department conducted the study, with help by a grant from the College of Liberal Arts.

See Bonace: Page 9