

Forum: Fostering Latina leadership is focus

• CONTINUED FROM PAGE 1

professor of Chicano studies and sociology at the University of Colorado at Boulder.

A majority of the events are open to those who registered ahead of time. However, two events are open to the public and are free of charge.

At 7 p.m. on Friday, there will be a screening of the film "Lone Star" in the Fine Arts

Auditorium. The film is the portrayal of the successes and troubles within a small town on the U.S./Mexico border.

On Saturday night, Maria Angeles Romero from Austin, Texas, will perform a one-women interpretation of "La Malinche." According to an ELLA flyer, "it portrays Malinche's immortal soul, reincarnated in the body of a pachuca."

The mission of ELLA "is to recognize, sponsor and develop the leadership of Latinas and Chicanas in the U.S.," Contreras said.

She and fellow ELLA organizers also hope to establish a local, state and national network of ELLA, increase racial and gender awareness.

They also hope to promote "all Latinas and Chicanas are leaders within their communities, and together with their children and partners the potential within all of us can be recognized," she said.

The conference will "provide the awareness to all our Chicana/Latina sisters everywhere,

and come together and be able to form this network and link so that we can continue on so this is not a one-time thing," said Elena Garcia of Chicano/Latino Student Services.

"(ELLA) will be a unique opportunity for Chicana women to get together" and discuss important issues in an understanding environment, said Victoria Salinas of the Chicano/Latino Student Services.

WSU offers Web classes

FROM STAFF REPORTS

WSU's Conferences & Institutes announced it will offer nine non-credit computer courses on information technology and web page production throughout the fall semester.

All courses are learner-based, outcome-oriented and taught on the Pullman campus. Early courses include: Web site production using HTML, Oct. 13-16 from 1 to 5 p.m.; Graphic Design with Adobe Photoshop, Oct. 22 from 8 to 5 p.m. and Oct. 23 from 1 to 5 p.m.; Supporting Microsoft Windows NT 4.0 Enterprise Technologies, Oct. 27-31 from 8 to 5 p.m.; and Advanced graphic design using Adobe Photoshop, Nov.

3-7 from 3 to 5 p.m.

Other offerings include: Administering Windows NT 4.0, Nov. 12-14; Implementing a database design on Microsoft SQL server 6.5, Nov. 17-21; Interworking Microsoft TCP/IP on Microsoft Windows NT 4.0, Dec. 1-5; Supporting Microsoft Windows NT 4.0, Dec. 1-5; Supporting Microsoft Windows NT 4.0 Core Technologies, Dec. 8-12; and Advanced web publishing with HTML, Dec. 15-18.

Enrollment will be limited. Registration fees range from \$299 to \$1,199. For specific course prices and further registration information, contact WSU Conferences & Institutes at 1-800/942-4978 or 335-3530.

Planting: Environmental group always could use help

• CONTINUED FROM PAGE 1

CSLC said students can personally benefit from volunteering.

"Students learn the value of service within the community," she said. "It gives you a real good opportunity to get involved."

The Center for Environmental Education organizes activities to promote environmental awareness, from regular Saturday tree plantings during the fall and spring to interstate and international conventions.

Along with educational projects and stream and wetland restoration, Sellen said the center's goal is to bring people with diverse backgrounds together to dis-

cuss issues relevant to the Palouse region. Instead of scientists simply talking with other scientists about environmental problems, CEE is trying to involve community leaders in finding solutions.

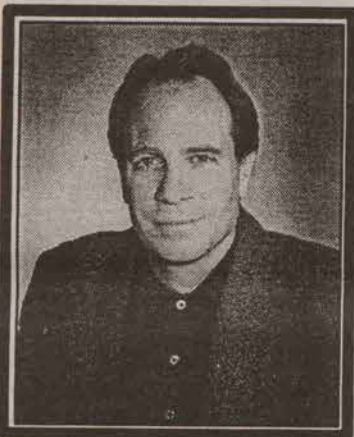
He stressed many people are environmentally aware on a global basis, but don't know much about the environmental condition of their local area.

"Environmental problems are cultural problems, not just scientific problems," he said.

The CEE often needs student volunteers and can be contacted at 335-1762.

The CSLC places student volunteers in different service venues — from environmental care to a student literacy corp.

CRIMINAL DEFENSE



ADMITTED TO
BAR 1976

FORMER
PROSECUTOR

TIMOTHY ESSER

NUXOLL, LIBEY, ENSLEY, ESSER & CAMPBELL

ATTORNEYS AT LAW

520 EAST MAIN

PULLMAN

332-7692

Greg Louganis

Wednesday, October 8, 7:30 p.m.
Beasley Coliseum



The extraordinary life of Greg Louganis, four-time Olympic gold medalist, unites all kinds of people from all over the world. Now he's coming to Pullman to share his story of tragedy and triumph, from sexual assault and rape to his incredible comeback at the '88 Olympics. Athletes, multicultural groups, gay and lesbian people, actors, the physically challenged, and many other people will find much to enjoy in Louganis' speech, which incorporates elements of his book, *Breaking the Surface*. Louganis will appear Wednesday.

Admission is FREE.

Cosponsored by GLBA Program and SIRC

Woman's tub death examined

THE ASSOCIATED PRESS

MEDICAL LAKE — Authorities are investigating the death of a mentally retarded woman whose body was found in a bathtub at a state institution.

Billie Jean Klossner, 41, died Sunday at her cottage at Lakeland Village, an institution for the developmentally disabled.

Klossner, who suffered from severe epilepsy, probably had a seizure, a pathologist said. The investigation is focusing on whether she died from the seizure or drowned after having a seizure while no one was watching her.

Lakeland authorities and the Washington State Patrol are investigating. Medical Lake police and an independent doctor also are reviewing the case, said Laurie Zapf, regional administrator for the Department of Developmental Disabilities, which oversees Lakeland Village.

Klossner had been a resident of Lakeland Village since she was about 7 and was mentally retarded since reacting to a whooping cough vaccine as a baby.

"She had a whole campus full of love. It was a wonderful place for her, and someone was negligent," said Betty Taylor, Klossner's mother.

Dr. George Lindholm, the pathologist who performed an autopsy, said Tuesday Klossner could have died from a seizure before slipping under the water. Or, she could have had a seizure and then drowned, he said.

CORRECTION

In Thursday's issue of *The Daily Evergreen*, the story, "WSU leaders tout school's achievements Wednesday," WSU was incorrectly stated to have the highest alumni giving rate in the nation. This is only partially true; WSU has the highest Alumni giving rate of public universities.

West 4th Bar & Grill
IN THE HOTEL MOSCOW

Smoke-free dining!

Scott!

The new menu & Mother's

not smoking take her back to the West 4th Bar & Grill for all her dates & meetings! - See you tonight! ~ Louisa

PS: Was it the Hefeweizen NW microbrew you raved about with the salmon? ... with 18 on tap . . .

Dinner Mon-Thurs 5-9 • Fri-Sat 5-10
W 4th Bar opens at 4, Fri at 3
Sunday Brunch 8 am ~ 2 pm

The Hotel Moscow
Main & West 4th
the garden lounge
West 4th Bar & Grill
Main Street deli & bakery

